

CURRENT TRANSFORMERS

SPLIT CORE CURRENT TRANSFORMER

MODEL FCL

Circular and Rectangular Models



MADE IN U.S.A.

- Most Ratios in Stock
- Seven Inside Diameter Sizes
- 1 or 5 Amp Secondaries
- 0-.333V or 1.0V Secondaries
- Custom Inserts Available



FEATURES

These split core current transformers are designed for easy installation over busbar or cable in order to provide a precise representation of the primary current. There are solutions for most commercially available meters and instrumentation.

APPLICATIONS

- Watt Transducer
- Demand Meter
- Sub-Metering
- Current Transducer
- Power Factor Meter
- Instrumentation
- KWH Meter
- Current Sensing Relays
- Energy Management Systems

SPECIFICATIONS

Construction

Directional silicon steel is used for the flexible core. Secondary windings are of copper. Unit is encapsulated in silicone rubber which protects against moisture, dirt, oil and corona, salinity, and UV.

Insulation Level	0.72kV, 10kV BIL Full Wave
Frequency	50-400Hz
Thermal Factor	1.25 at 30°C, 1.0 at 55°C
Operating Temp Range	-45°C to +55°C
Altitude	Up to 4000 Meters
Accuracy	200:5 thru 300:5 4%
	400:5 thru 500:5 3%
	600:5 thru 800:5 2%
	1000:5 thru 6000:5 1%

Secondary Leads..... 12 Ft. with Spade Connectors
 Custom lead lengths are available.

Color

Remains flexible from -45°C to +200°C

Meets IEC 61869 Standards

ORDERING INFORMATION

FCL X X X X / X - X

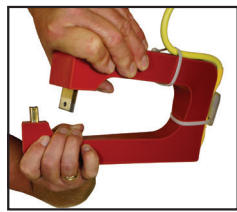
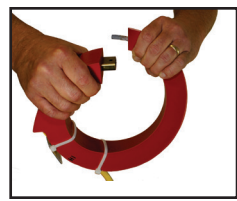
RATIO ————|—————|—————|

I.D. ————|—————|—————|

-4 -6 -8 -11 -18 -R -R411

Example: 1000A Split Core with
 6" Inside Diameter
FCL1000/5-6

Note: Open split core with a twisting motion only.



CURRENT TRANSFORMERS

SPLIT CORE CURRENT TRANSFORMERS

MODEL FCL

SPECIFICATIONS: 5 AMP SECONDARY MODELS

CURRENT RATIO	INSIDE DIAMETER						BURDEN CAPACITY	ACCURACY	
	ROUND				RECTANGLE				
	4"	6"	8"	11"	18"	-R			-R411
200/5	X	-	-	-	-	-	-	2VA	4%
250/5	X	-	-	-	-	-	-	2VA	4%
300/5	X	X	-	-	-	-	-	2VA	4%
400/5	X	X	-	-	-	X	-	2VA	3%
500/5	X	X	-	-	-	X	-	3VA	3%
600/5	X	X	-	-	-	X	-	5VA	2%
800/5	X	X	-	-	-	X	-	5VA	2%
1000/5	X	X	X	-	-	X	-	5VA	1%
1200/5	X	X	X	-	-	X	-	5VA	1%
1500/5	X	X	X	X	-	X	X	15VA	1%
1600/5	X	X	X	X	-	X	X	15VA	1%
2000/5	X	X	X	X	X	X	X	25VA	1%
2400/5	-	X	X	X	X	X	X	30VA	1%
2500/5	-	X	X	X	X	X	X	35VA	1%
3000/5	-	X	X	X	X	X	X	45VA	1%
3500/5	-	X	X	X	X	X	X	45VA	1%
4000/5	-	X	X	X	X	X	X	45VA	1%
5000/5	-	-	X	X	X	-	X	45VA	1%
6000/5	-	-	-	X	X	-	X	45VA	1%

AVERAGE WEIGHT	4"	6"	8"	11"	18"	(R) 2 3/4"x6 5/8"	(R411) 4"x11"
	4.00 Lbs.	6.00 Lbs.	7.00 Lbs.	9.00 Lbs.	17 Lbs.	6.00 Lbs.	8.00 Lbs.

SPECIFICATIONS: 1 AMP SECONDARY MODELS

CURRENT RATIO	INSIDE DIAMETER						BURDEN (Ω)	ACCURACY	
	ROUND				RECTANGLE				
	4"	6"	8"	11"	18"	-R			-R411
200/1	X	-	-	-	-	-	-	0.5	1%
250/1	X	-	-	-	-	-	-	0.5	1%
300/1	X	-	-	-	-	-	-	0.5	1%
400/1	X	-	-	-	-	-	-	0.9	1%
500/1	X	X	-	-	-	X	-	2.0	1%
600/1	X	X	-	-	-	X	-	3.0	1%
800/1	X	X	-	-	-	X	-	5.0	1%
1000/1	X	X	X	-	-	X	X	10.0	1%
1200/1	-	X	X	-	-	X	X	15.0	1%
1500/1	-	X	X	X	-	X	X	15.0	1%
1600/1	-	X	X	X	-	X	X	15.0	1%
2000/1	-	X	X	X	X	-	X	18.0	1%
2400/1	-	-	X	X	X	-	X	20.0	1%
2500/1	-	-	X	X	X	-	X	20.0	1%
3000/1	-	-	-	X	X	-	-	20.0	1%

AVERAGE WEIGHT	4"	6"	8"	11"	18"	(R) 2 3/4"x6 5/8"	(R411) 4"x11"
	5.00 Lbs.	7.00 Lbs.	8.00 Lbs.	9.50 Lbs.	18 Lbs.	7.00 Lbs.	8.50 Lbs.

CURRENT TRANSFORMERS

SPLIT CORE CURRENT TRANSFORMERS

MODEL FCL

SPECIFICATIONS: 1.0 VOLT SECONDARY MODELS

CURRENT RATIO	INSIDE DIAMETER							ACCURACY
	ROUND					RECTANGLE		
	4"	6"	8"	11"	18"	-R	-R411	
200/1Vac	X	-	-	-	-	-	-	1%
250/1Vac	X	-	-	-	-	-	-	1%
300/1Vac	X	-	-	-	-	-	-	1%
400/1Vac	X	-	-	-	-	-	-	1%
500/1Vac	X	X	-	-	-	X	-	1%
600/1Vac	X	X	-	-	-	X	-	1%
800/1Vac	X	X	-	-	-	X	-	1%
1000/1Vac	X	X	X	-	-	X	X	1%
1200/1Vac	-	X	X	-	-	X	X	1%
1500/1Vac	-	X	X	X	-	X	X	1%
1600/1Vac	-	X	X	X	-	X	X	1%
2000/1Vac	-	X	X	X	X	-	X	1%
2400/1Vac	-	-	-	X	X	-	X	1%
2500/1Vac	-	-	-	X	X	-	X	1%
3000/1Vac	-	-	-	X	X	-	-	1%

AVERAGE	4"	6"	8"	11"	18"	(R) 2 3/4"x6 5/8"	(R411) 4"x11"
WEIGHT	5.00 Lbs.	7.00 Lbs.	8.00 Lbs.	9.00 Lbs.	18 Lbs.	7.00 Lbs.	8.50 Lbs.

SPECIFICATIONS: 0.333 VOLT SECONDARY MODELS

CURRENT RATIO	INSIDE DIAMETER							ACCURACY
	ROUND					RECTANGLE		
	4"	6"	8"	11"	18"	-R	-R411	
200/0.333Vac	X	-	-	-	-	-	-	1%
250/0.333Vac	X	-	-	-	-	-	-	1%
300/0.333Vac	X	-	-	-	-	-	-	1%
400/0.333Vac	X	-	-	-	-	-	-	1%
500/0.333Vac	X	X	-	-	-	X	-	1%
600/0.333Vac	X	X	-	-	-	X	-	1%
800/0.333Vac	X	X	-	-	-	X	-	1%
1000/0.333Vac	X	X	X	-	-	X	X	1%
1200/0.333Vac	X	X	X	-	-	X	X	1%
1500/0.333Vac	X	X	X	X	-	X	X	1%
1600/0.333Vac	X	X	X	X	X	X	X	1%
2000/0.333Vac	-	X	X	X	X	X	X	1%
2400/0.333Vac	-	X	X	X	X	X	X	1%
2500/0.333Vac	-	X	X	X	X	X	X	1%
3000/0.333Vac	-	X	X	X	X	X	X	1%
3500/0.333Vac	-	X	X	X	X	X	X	1%
4000/0.333Vac	-	X	X	X	X	X	X	1%
5000/0.333Vac	-	-	X	X	X	-	X	1%
6000/0.333Vac	-	-	X	X	X	-	X	1%

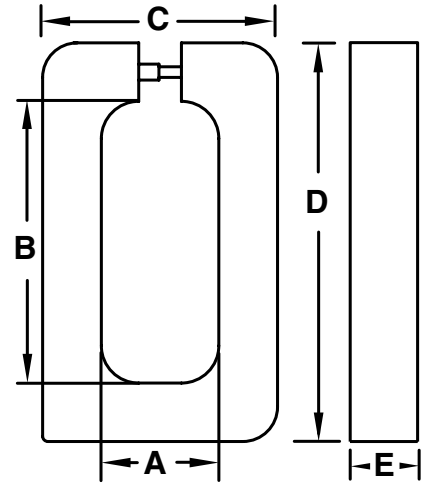
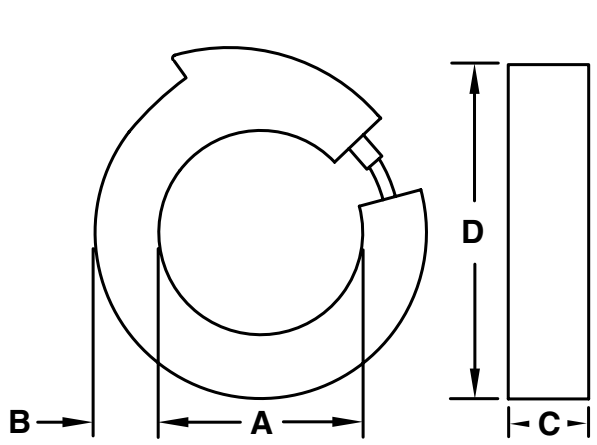
AVERAGE	4"	6"	8"	11"	18"	(R) 2 3/4"x6 5/8"	(R411) 4"x11"
WEIGHT	4.00 Lbs.	6.00 Lbs.	7.00 Lbs.	9.00 Lbs.	17 Lbs.	6.00 Lbs.	8.00 Lbs.

CURRENT TRANSFORMERS

SPLIT CORE CURRENT TRANSFORMERS

MODEL FCL

DIMENSIONS



INSIDE DIAMETER	CIRCULAR				
A	B	C	D	MODEL	
4	1 1/4	1 1/2	6 1/2	-4	
6	1 1/4	1 1/2	8 1/2	-6	
8	1 1/4	1 1/2	10 1/2	-8	
11	1 1/4	1 1/2	13 1/2	-11	
18	1 1/4	1 1/2	20 1/2	-18	

INSIDE DIAMETER	RECTANGULAR					
A	B	C	D	E	MODEL	
2 3/4	6 5/8	5 1/2	9 3/8	1 1/2	-R	
4	11	6 1/2	13 3/8	1 1/2	-R411	

All Dimensions In Inches
 Black Wire = X1
 White Wire = X2

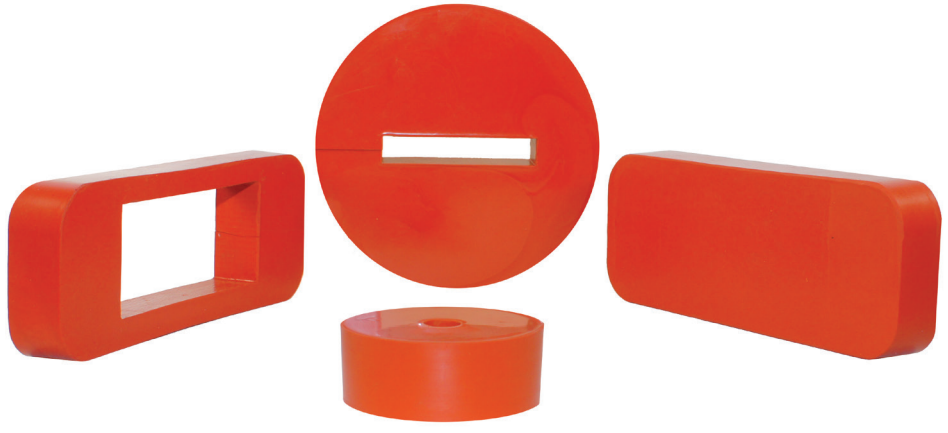
CUSTOM INSERTS FOR FCL, FC CURRENT TRANSFORMERS

FEATURES

- Silicone rubber inserts (split, solid, customized)
- Custom cutouts to fit buss or cable sizes
- Designed to make installations easier
- Makes installation look cleaner
- Fits exact I.D. of 4", 6", 8", 11", 18", R, or R411 model FCL or FC Current Transformers
- May be used on indoor or *outdoor applications
- *Model FC only

SPECIFICATIONS

- Silicone rubber
- Offers added isolations of 575V/Mil insulation
- Remains Flexible from -45°C to +200°C
- Orange Color



5001 Baum Blvd., Pittsburgh, PA
 info@ayainstruments.com|
 412.622.5500