

CURRENT TRANSFORMERS

OUTDOOR CURRENT TRANSFORMERS

MODEL CRE-17

SPECIFICATIONS

15KV CLASS

Designed for outdoor service.
 Suitable for operating meters, instruments, relays and control devices.
 Insulation Level..... 15.5kV, 110kV BIL per C57.13
 Frequency.....60Hz
 WeightApproximately 68 Lbs.

FEATURES

The CRE-17 core is encapsulated with Type B epoxy resin for dielectric and mechanical strength. The external layer is Hydrophobic Cycloaliphatic Epoxy (HCEP) which extends service life expectancy and increases weatherability. Insulation levels meet or exceed those specified in IEEE C57.13, CAN/CSA and IEC. Superior designs and HCEP epoxy are combined to produce the highest quality and reliability available in the industry for outdoor applications. The transformer is maintenance free and is supplied with test cards showing factory test data.

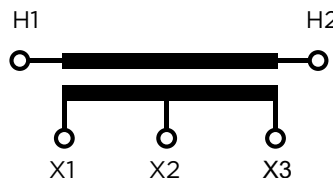


Manufactured to meet the requirements of ANSI/IEEE C57.13

CATALOG NUMBER	CURRENT RATIO	RELAY CLASS 60Hz	METERING CLASS 60Hz	CONTINUOUS THERMAL RATING FACTOR @30°C
TAPPED SECONDARY		CRE-17 15kV, 110kV BIL		
756235210-H	50/100:5	T75	0.3 B-0.5	2.0
		T150	0.3 B-1.8	1.5
756235211-H	200/400:5	T75	0.3 B-0.5	2.0
		T150	0.3 B-1.8	1.5
756235212-H	600/1200:5	T75	0.3 B-0.5	1.0
		T150	0.3 B-1.8	1.0

CONNECTION DIAGRAM

ONE SECONDARY WITH TAP



5001 Baum Blvd.,
 Pittsburgh, PA 15213



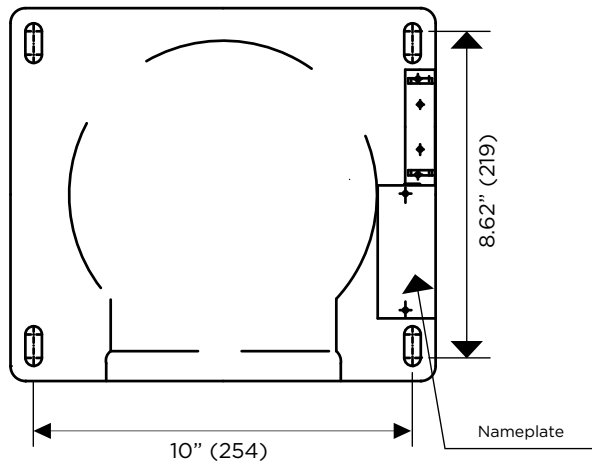
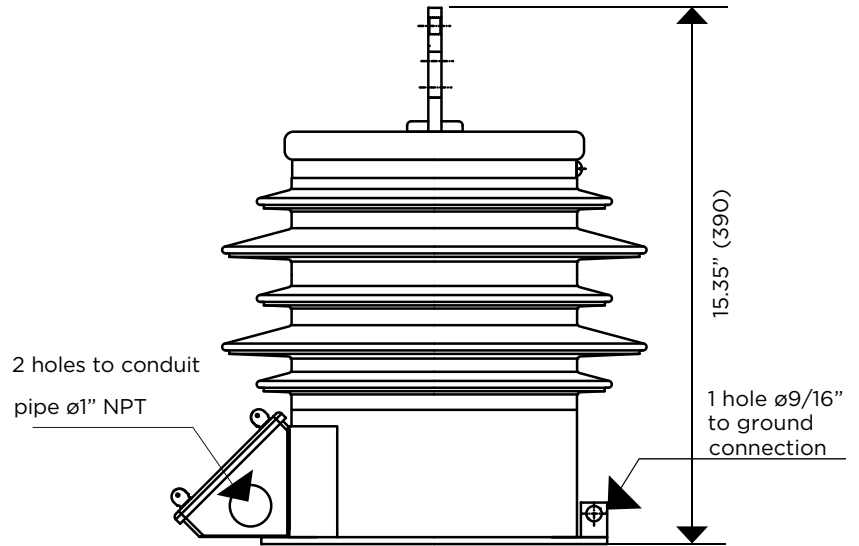
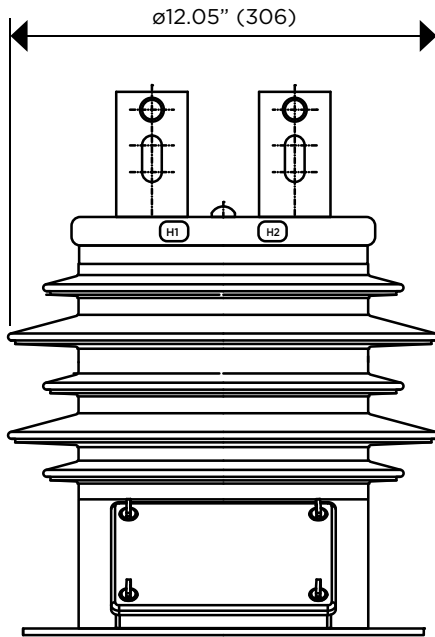
Email: info@ayainstruments.com
 Phone: 412.622.5500

CURRENT TRANSFORMERS

OUTDOOR CURRENT TRANSFORMER

MODEL CRE-17

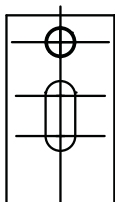
DIMENSIONS



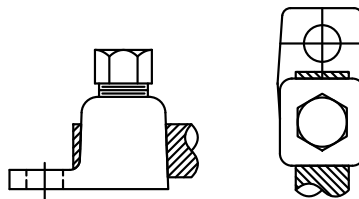
PRIMARY TERMINAL

GROUND CONNECTOR

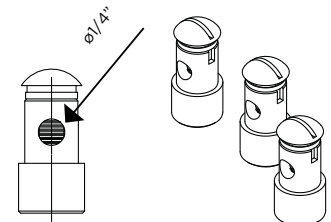
SECONDARY TERMINAL



Type: NEMA-2
Material: Copper



Type: TE-12-250 Material:
Copper Range: 4TRE-250MCM



Type: Quick Connector
Material: Brass

5001 Baum Blvd.,
Pittsburgh, PA 15213



Email: info@ayainstruments.com
Phone: 412.622.5500